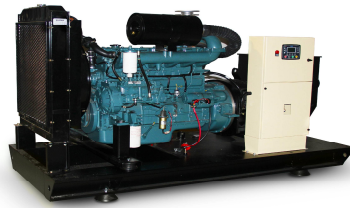




IDJ1295DW

**IDEA DIESEL GENERATING SET
TECHNICAL SPECIFICATIONS**



ELECTRICAL			
FREQUENCY	VOLTAGE	PRIME	STAND-BY
50 Hz	400/230 V	1150 kVA / 920 kW	1295 kVA / 1036 kW
Rated Speed	1500 RPM		
Phase	3		
Power Factor	0,8		

Prime : This rating is for the supply of continuous electrical power at variable load. There is no limitation on the annual hours in operation and 10% overload power can be supplied for 1 hour in 12.

Stand-by : This rating is for the supply of continuous electrical power at variable load , in the event of utility power failure.No overload is permitted.

WEIGHT AND DIMENSIONS			
		OPEN	CANOPY
Length	mm	5100	9145
Width	mm	2200	2470
Height	mm	2750	3100
Wet Weight	kg	9600	14450

IDJ1295DW

ENGINE		
Output Rating	kWm	1180
Manufacturer and Model		Daewoo 12DWG-1390
Fuel		Diesel
Injection		Direct
Aspiration		Turbocharged & Air to Air Intercooled
Cylinders		12
Bore and Stroke	mm	170 x 195
Displacement	lt	53,1
Cooling		Water
Engine Oil Specification		SAE 15W40
Compression Ratio		13,5 : 1
Engine Oil Capacity	lt	180
Coolant Capacity (incl.radiator)	lt	280
Governor		Electronic
Air Filter		Dry element
Fuel Consumption		50 Hz
110 % Load	lt/h	277,0
100 % Load	lt/h	252,0
75 % Load	lt/h	191,0
50 % Load	lt/h	133,0

FUEL SYSTEM		
Diesel Specification		EN590
Fuel Tank Capacity	lt	TBA

ALTERNATOR		
Poles		4 pole
Winding Connections		Star
Insulation		Class H
Enclosure		IP23
Exciter System		Self regulating Brushless
Voltage Regulator		AVR
Steady State Voltage Regulation		± 1 %
Bearing		Single bearing sealed
Coupling		Flexible disc
Cooling		Direct drive centrifugal blower fan

CONTROL PANEL - IDP300

The IDP300 is a comprehensive AMF unit for single genset standby or dual genset mutual standby operations. The unit provides a comprehensive set of digitally adjustable timers, threshold levels, input and output configurations, operating sequences and engine types. All programs may be modified via front panel pushbuttons, and do not require an external unit. Last 100 faults are stored in the event log file. The event log includes not only the date-time information, but also a comprehensive list of measured genset parameters at the time that the fault has occurred.



CONTROL PANEL FEATURES	
Alarm and Shutdown functions	
High Coolant Temperature	Alarm & Shutdown
Low Oil Pressure	Alarm & Shutdown
Battery High / Low Voltage	Alarm
Battery Charger Alternator Failure	Alarm
Overspeed / Underspeed	Alarm & Shutdown
Failure to Start	Alarm & Shutdown
Low Coolant Level	Alarm & Shutdown
Stop Fault	Alarm & Shutdown
Low Fuel Level	Alarm
Service Required	Alarm
Generator High / Low Voltage	Alarm & Shutdown
Generator High / Low Frequency	Alarm & Shutdown
Symmetry between Phases	Alarm & Shutdown
Over Current	Alarm & Shutdown
Recitifer Fail	Alarm
ECU failure	Alarm
Measure and Monitor functions	
Total Run Hour	Coolant Temperature
kW meter - Generator	Oil Pressure
Service Indicator	Fuel Level
Phase to Phase Voltage - Mains	Battery Voltage
Phase to Neutral Voltage - Mains	Engine RPM
Phase to Phase Voltage - Generator	Battery Charge Alternator Voltage
Phase to Neutral Voltage - Gen.	Frequency - Generator & Mains
Phase current - Generator	Power Factor - Generator
Other functions	
Events History	Programmable Timer
External Start Capability	Multi Lingual
Start Restriction Program	Lamp test
Mains Failure Start	Remote Monitoring
Test Run Start (On load & off Load)	Manual Override
Allows SMS controls	Remote Programming
Fuel consumption counter	Magnetic Pick Up Input
Waveform display of voltage & current	Total Harmonic Distortion view
Programmable as an ATS controller	Manual "speed fine adjust" on selected ECUs
Standardized USB port for programming and communication	J1939-CANBUS for electrocially governed engines

GENERATOR FEATURES	STANDARD		OPTIONAL
	MANUAL	AUTOMATIC	
ENGINE			
Engine		●	X
Cooling Pack		●	X
Tropical Radiator		X	●
Heavy Duty Air Filter		X	●
Electronic Governor		●	X
High Coolant Temperature Sender		●	X
Low Oil Pressure Sender		●	X
Low Coolant Level Sender		●	X
Radiator Guards		●	X
Hot Component Guards		●	X
Manual Oil Drain Pump		X	●
Fuel Prefilter		X	●
Water Jacket Heater	X	●	● (Manual)
Industrial Silencer - Open Set		●	X
Residential Silencer - Open Set		X	●
Residential Silencer - Canopy		●	X
Cold start aid		X	●
Remote Radiator		X	●
Trailer		X	●
ELECTRICS			
Alternator		●	X
Circuit Breaker - 3 poles		X	●
Circuit Breaker - 4 poles		X	●
Battery Isolator		X	●
Earth Fault Protection		X	●
Anti condensation Heater		X	●
Optional Voltages		X	●
Class F insulation		X	●
External Stop Button - Canopy		●	X
GSM SMS message sending on fault		X	●
Battery Charger	X	●	● (Manual)
ATS Panel - 3 Poles	X	●	X
ATS Panel - 4 Poles	X	X	● (Automatic)
Synchronisation Panel	X	X	● (Automatic)

● - Available X - Not Available

REFERENCE STANDARDS

IDEA Generating Sets are CE certified and conform to the following standards ;

- Power according to ISO 3046 and ISO 8528
- EN 12100 , EN 13857 , EN 60204
- 2006/42/CE Machinery Safety
- 2006/95/EC Low Voltage
- 2004/108/CE EMC
- Ambient reference conditions 1000 mbar, 25 °C, 30 % relative humidity ISO8528

All the information in this leaflet is intended for general purposes only. IDEA reserves the right to change the specifications without notice.

IDEA MAKİNA İMALAT SAN. ve TİC. LTD.ŞTİ

Istanbul Deri O.S.B Sama Cad.(12.Yol) No:7

34957 Tuzla – İstanbul / Türkiye

Tel : + 90 216 313 42 77 , + 90 216 313 42 78 Fax : + 90 216 313 42 79

E-mail : info@ideamakina.com.tr